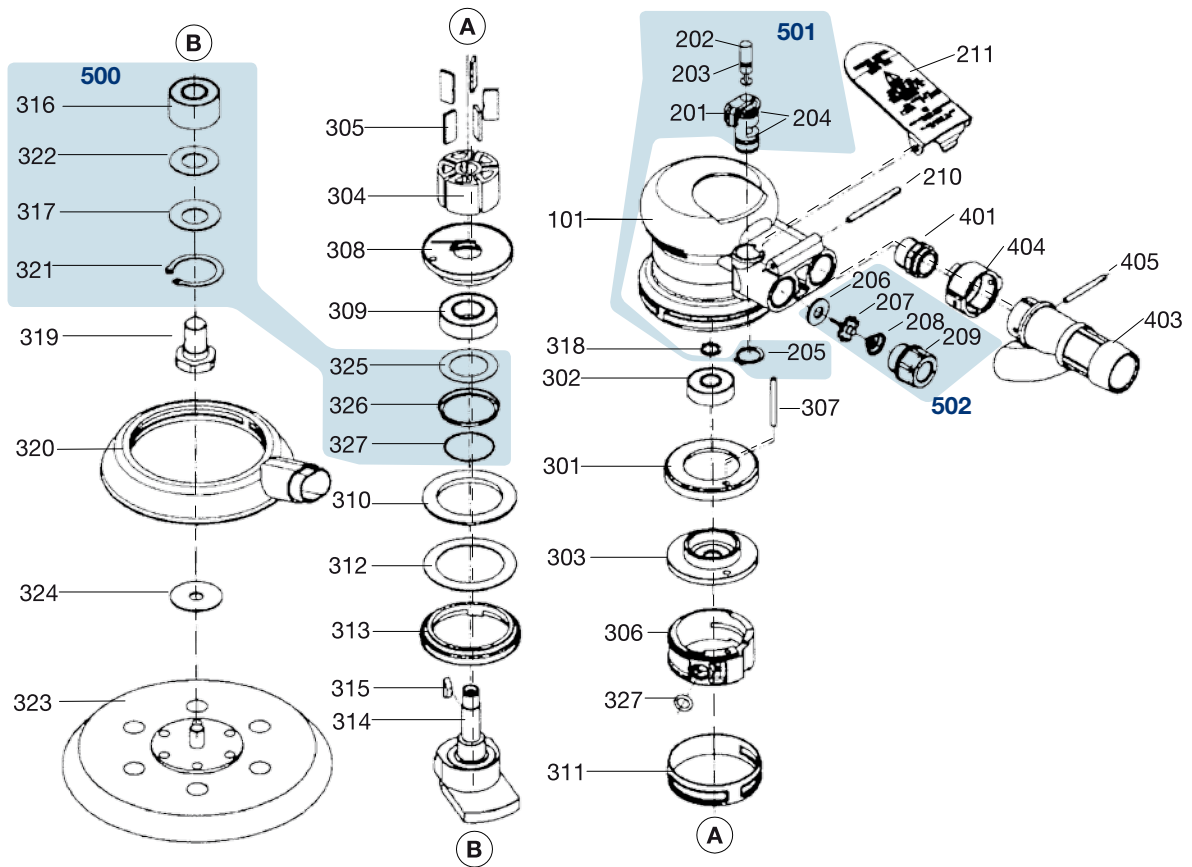



Erersatzteile 9033-2



| | HAZET No. | Bezeichnung | Name | Désignation | |
|-----|--------------|----------------------|---------------------|----------------------------------|---|
| 101 | | Gehäuse | Housing | Boîtier | 1 |
| | | Inhalt: 101 | Contents: 101 | Contenu: 101 | |
| 210 | | Federstift | Spring Pin | Goupille élastique | 1 |
| | | Inhalt: 210 | Contents: 210 | Contenu: 210 | |
| 211 | | Auslösehebel | Trigger | Levier de déclenchement | 1 |
| | | Inhalt: 211 | Contents: 211 | Contenu: 211 | |
| 301 | | Vorderer Ring | Front Ring | Anneaux avant | 1 |
| | | Inhalt: 301 | Contents: 301 | Contenu: 301 | |
| 302 | | Lager-302 | Bearing | Palier | 1 |
| | | Inhalt: 302 | Contents: 302 | Contenu: 302 | |
| 303 | | Vordere Lagerscheibe | Front Bearing Plate | Rondelle roulement de roue avant | 1 |
| | | Inhalt: 303 | Contents: 303 | Contenu: 303 | |
| 304 | | Rotor | Rotor | Rotor | 1 |
| | | Inhalt: 304 | Contents: 304 | Contenu: 304 | |
| 305 | | Lamellen | Blades | Lamelles | 5 |
| | | Inhalt: 305 | Contents: 305 | Contenu: 305 | |
| 306 | | Zylinder | Cylinder | Vérin | 1 |
| | | Inhalt: 306 | Contents: 306 | Contenu: 306 | |
| 307 | | Einregelstift | Line-Up Pin | | 1 |
| | | Inhalt: 307 | Contents: 307 | Contenu: 307 | |

| | HAZET No. | Bezeichnung | Name | Désignation |  |
|-----|---------------------|---|--|---|---|
| 308 | | Hintere Lagerscheibe | Rear Bearing Plate | Rondelle roulement de roue arrière | 1 |
| | | Inhalt: 308 | <i>Contents: 308</i> | <i>Contenu: 308</i> | |
| 309 | | Lager | Bearing | Palier | 1 |
| | | Inhalt: 309 | <i>Contents: 309</i> | <i>Contenu: 309</i> | |
| 310 | | Hintere Ring | Rear Ring | Anneaux arrière | 1 |
| | | Inhalt: 310 | <i>Contents: 310</i> | <i>Contenu: 310</i> | |
| 311 | | Mittlerer Ring | Middle Ring | Anneaux midie | 1 |
| | | Inhalt: 311 | <i>Contents: 311</i> | <i>Contenu: 311</i> | |
| 312 | | Wellenscheibe | Washer | Rondelle ondulée | 1 |
| | | Inhalt: 312 | <i>Contents: 312</i> | <i>Contenu: 312</i> | |
| 313 | | Sicherungsdichtring | Lock Ring Seal | Joint d'étanchéité de sécurité | 1 |
| | | Inhalt: 313 | <i>Contents: 313</i> | <i>Contenu: 313</i> | |
| 314 | | Motorachsen-Ausgleichswelle | Motor Shaft Balancer | | 1 |
| | | Inhalt: 314 | <i>Contents: 314</i> | <i>Contenu: 314</i> | |
| 315 | | Rotorschlüssel | Rotor Key | | 1 |
| | | Inhalt: 315 | <i>Contents: 315</i> | <i>Contenu: 315</i> | |
| 318 | | Seegering | Snap Ring | Circlip | 1 |
| | | Inhalt: 318 | <i>Contents: 318</i> | <i>Contenu: 318</i> | |
| 319 | | Ausgleichswelle | Balancer Shaft | | 1 |
| | | Inhalt: 319 | <i>Contents: 319</i> | <i>Contenu: 319</i> | |
| 320 | | Vacuum-Schutzblech | Vacuum-Shroud | Tôle de protection vacuum | 1 |
| | | Inhalt: 320 | <i>Contents: 320</i> | <i>Contenu: 320</i> | |
| 323 | | Anschlagpuffer | PAD | | 1 |
| | | Inhalt: 323 | <i>Contents: 323</i> | <i>Contenu: 323</i> | |
| 324 | | Kopfisolations-Wellenscheibe | Heat Isolation Washer | rondelle ondulée | 1 |
| | | Inhalt: 324 | <i>Contents: 324</i> | <i>Contenu: 324</i> | |
| 401 | | Schalldämpfer Schraube | Muffler Screw | | 1 |
| | | Inhalt: 401 | <i>Contents: 401</i> | <i>Contenu: 401</i> | |
| 403 | | Vacuum-Adapter | Vacuum Adapter | | 1 |
| | | Inhalt: 403 | <i>Contents: 403</i> | <i>Contenu: 403</i> | |
| 404 | | Anschlussbuchse | Connector | Douille de raccordement | 1 |
| | | Inhalt: 404 | <i>Contents: 404</i> | <i>Contenu: 404</i> | |
| 405 | | Zylinderstift | Dowel Pin | Goupille cylindrique | 1 |
| | | Inhalt: 405 | <i>Contents: 405</i> | <i>Contenu: 405</i> | |
| 500 | 9033-02/7 | Lager | Bearing | Palier | 1 |
| | | Inhalt: 316, 317, 321, 322, 325, 326, 327 | <i>Contents: 316, 317, 321, 322, 325, 326, 327</i> | <i>Contenu: 316, 317, 321, 322, 325, 326, 327</i> | |
| 501 | 9033-02/6 | Regler | <i>Regulator</i> | <i>Régulateur</i> | 1 |
| | | Inhalt: 201, 202, 203, 204 (2X), 205 | <i>Contents: 201, 202, 203, 204 (2x), 205</i> | <i>Contenu: 201, 202, 203, 204 (2x), 205</i> | |
| 502 | 9033-02/4 | Ventileinheit | <i>Valve Unit</i> | <i>Unité de soupape</i> | 1 |
| | | Inhalt: 206, 207, 208, 209 | <i>Contents: 206, 207, 208, 209</i> | <i>Contenu: 206, 207, 208, 209</i> | |