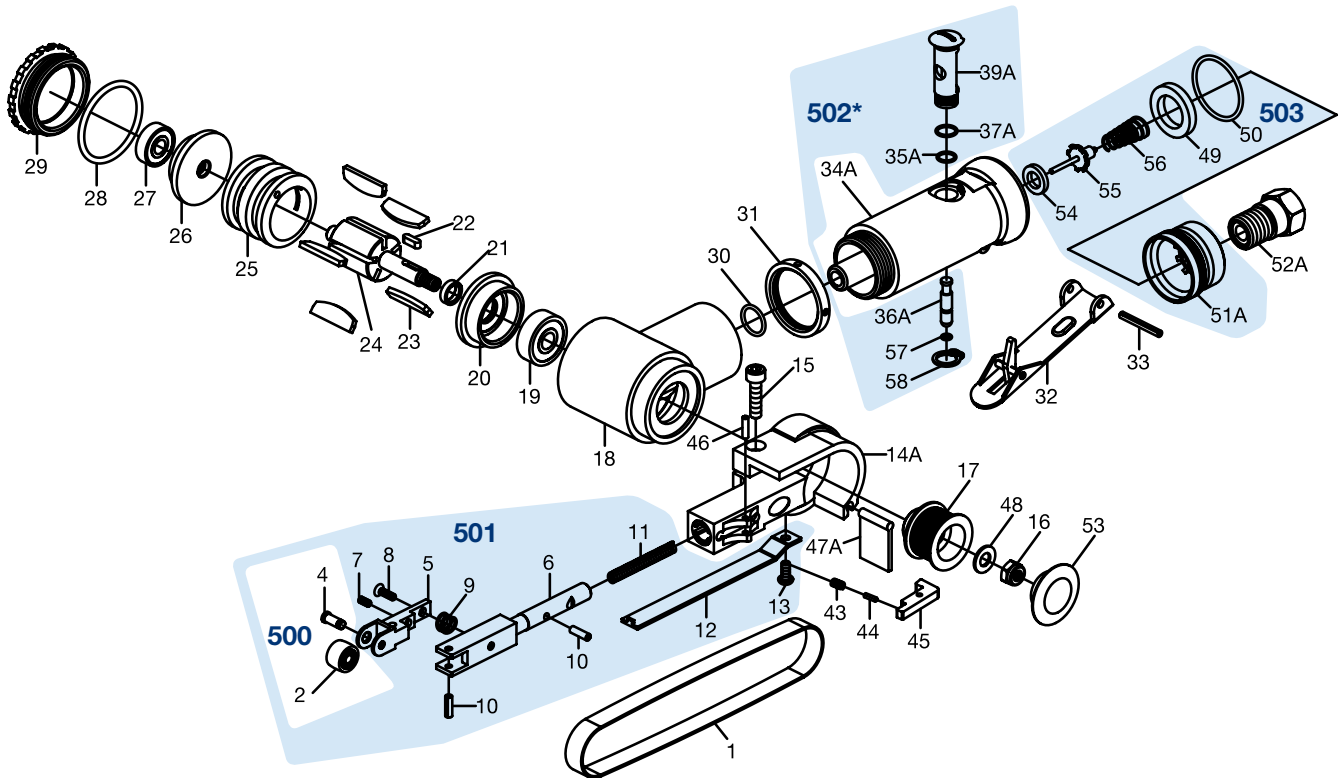





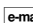
# Erersatzteile 9033-4






	HAZET No.	Bezeichnung	Name	
1		Schleifband (Set a 80,100,120)	Grinding Belt (#80,#100,#120)	1
13		Auslösehebel	Throttle Lever	1
14		Hebelbolzen	Lever Pin	1
14A	120683	Schutzblech	Guard Sub Assy A	1
15		Sechskantbolzen 5x12	Hexagon Socket Head Bolt 5x12	1
16		Sechskantmutter M6	Hexagon Nut M6	1
17	120678	Antriebsrad	Drive Pulley	1
18		Gehäuse	Housing	1
19	120680	Kugellager	Ball Bearing	1
20		Vordere Endscheibe	Front End Plate	1
21		Distanzscheibe	Spacer	1
22		Senkpassfeder	Sunk Key	1
23	120682	Lamellen	Rotor Blade	Set a' 5 Stk.
24		Rotor	Rotor	1
25		Zylinder	Cylinder	1
26		Hintere Platte	Rear Plate	1
27	120681	Kugellager	Ball Bearing	1
28		O-Ring	O-Ring	1


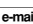
	<b>HAZET</b> No.	<b>Bezeichnung</b>	<b>Name</b>	
29		Motorschraubenmutter	<i>Motor Nut</i>	1
30		O-Ring	<i>O-Ring</i>	1
31		Kontermutter	<i>Lock Nut</i>	1
32		Auslösehebel	<i>Throttle Lever</i>	1
34A*		Motorengehäuse	<i>Motor Housing</i>	1
43		Feder	<i>Spring</i>	1
44		Hebelbolzen	<i>Lever Pin</i>	1
45		Spannleiste	<i>Tension Bar</i>	1
46	120679	Hebelbolzen	<i>Lever Pin</i>	1
47A	120684	Staubabdeckung	<i>Dust Cover</i>	1
48		Dichtungsring	<i>Washer</i>	1
52A		Druckluftzufuhr	<i>Air Inlet</i>	1
53	120677	Abdeckkappe	<i>Cap</i>	1
500	9033-04/2	Laufrolle Inhalt: 2, 4	<i>Idle Pulley</i> <i>Contents: 2, 4</i>	1
501	9033-04/12	Laufband Inhalt: 2, 4, 5, 6, 7, 8, 9, 10 (x2), 11, 12, 13	<i>Idle Pulley Set</i> <i>Contents: 2, 4, 5, 6, 7, 8, 9, 10 (x2), 11, 12, 13</i>	1
502	9033-04/8	Ventileinheit Inhalt: 35, 36, 37, 38, 39, 40, 41, 42	<i>Valve-Set</i> <i>Contents: 35, 36, 37, 38, 39, 40, 41, 42</i>	1
502*	9033-4-01/6 N	Ventileinheit Inhalt: 35A, 36A, 37A, 39A, 57, 58	<i>Valve-Set</i> <i>Contents: 35A, 36A, 37A, 39A, 57, 58</i>	1
503*	9033-4-02/6 N	Luftleinlaß Inhalt: 49, 50, 51A, 54, 55, 56	<i>Air Inlet</i> <i>Contents: 49, 50, 51A, 54, 55, 56</i>	1
Alle Positionen, die keine <b>HAZET</b> No. haben, sind nur über den HAZET-Service zu bestellen				

Zur Bestellung und für Rückfragen wenden Sie Sich bitte an unsere Service-Abteilung.

 02191/792355 •  02191/792523 •  service-center@hazet.de

**HAZET - WERK Hermann Zerver GmbH & Co. KG** •  10 04 61 • D-42804 Remscheid • Germany

 +49 (0) 21 91 / 7 92-0 •  +49 (0) 21 91 / 7 92-375 (National) •  +49 (0) 21 91 / 7 92-400 (International)

 hazet.de •  info@hazet.de