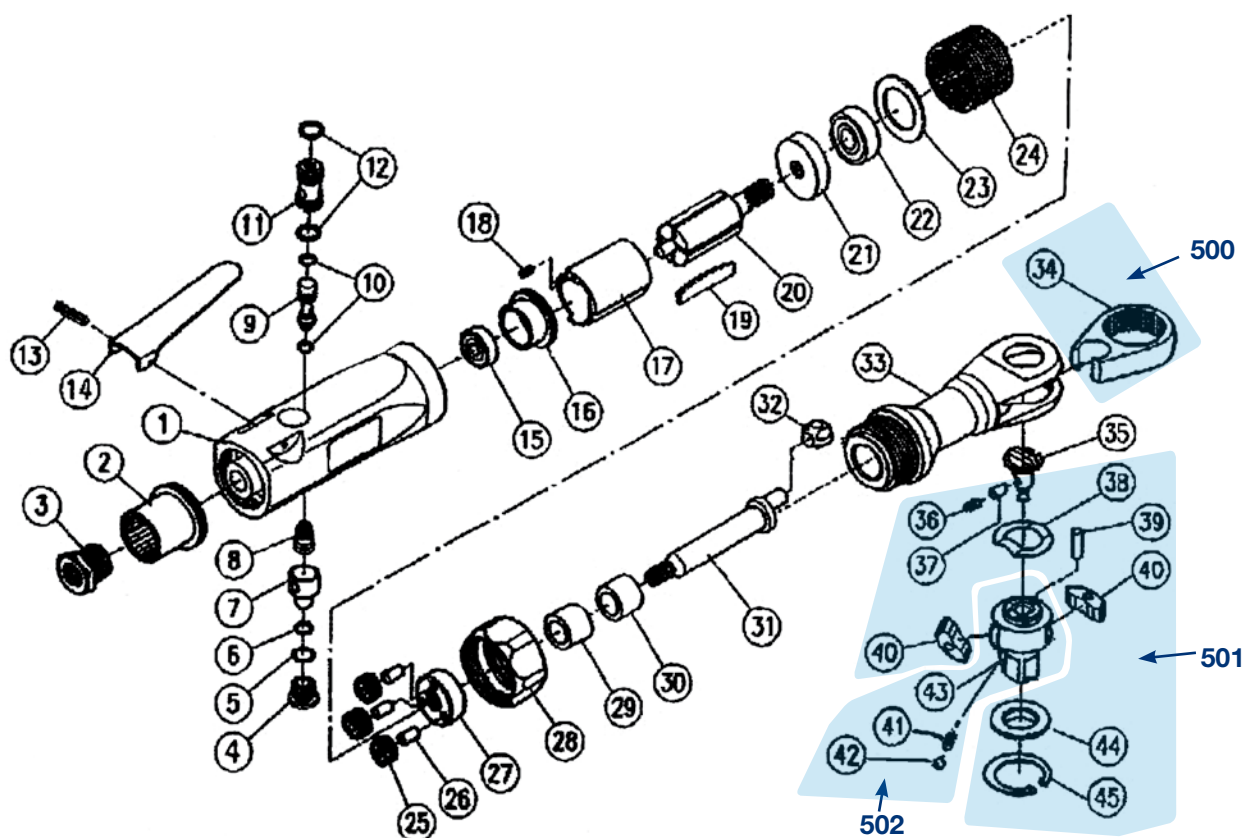




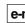
# Erersatzteile 9022-2






	HAZET No.	Bezeichnung	Name	
1		Gehäuse	Housing	1
2		Abschlusskappe	End Cap	1
3	120574	Anschlusskopf	Connection Head	1
4	120597	Ventilschraube	Valve Screw	1
5	120590	O-Ring	O-Ring	1
6		O-Ring	O-Ring	1
7	120587	Luftregulierer	Air Regulator	1
8	120580	Feder	Spring	1
9	120596	Ventilschaft	Valve Stem	1
10	120591	O-Ring	O-Ring	Set a' 2 Stk.
11	120595	Ventilbuchse	Valve Bushing	1
12		O-Ring	O-Ring	Set a' 2 Stk.
13	120582	Hebel-Stift	Lever Pin	1
14		Hebel	Lever	1
15	120584	Lager	Rear Bearing	1
16	120579	Endplatte	End Plate	1
17	120803	Zylinder	Cylinder	1
18	120804	Zylinderstift	Cylinder Pin	1


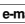
	<b>HAZET</b> No.	<b>Bezeichnung</b>	<b>Name</b>	
19	120586	Lamelle	Rotor Blade	Set a´ 4 Stk.
20	120592	Rotor	Rotor	1
21	120581	Frontplatte	Front Plate	1
22	120585	Lager	Front Bearing	1
23	120593	Scheibe	Washer	1
24	120802	Zahnkranz	Thread Ring Gear	1
25	120576	Antriebsritzel	Idler Gear	Set a´ 3 Stk.
26	120578	Antriebsritzel-Stift	Idler Gear Pin	Set a´ 3 Stk.
27	120577	Antriebsritzel-Platte	Idler Gear Plate	1
28	120588	Mutter	Clamp Nut	1
29		Abstandsbuchse	Spacer	1
30	120589	Nadellager	Needle Bearing	1
31	120583	Kurbelwelle	Crank Shaft	1
32	120575	Antriebsbuchse	Drive Bushing	1
33		Ratschengehäuse	Ratchet Housing	1
35	120594	Umschaltknopf	Reverse Button	1
500	9022-02	Gabel	Yoke	1
501	9022-02/11	Ratschen-Innenteile	Ratchet-Repair-Set	1
502	9022-02/5	Vierkant	Anvil	1
Alle Positionen, die keine HAZET-Nr. haben, sind nur über den HAZET-Service zu bestellen				

Zur Bestellung und für Rückfragen wenden Sie sich bitte an unsere Service-Abteilung.

 +49 (0) 21 91/7 92 355 •  +49 (0) 21 91/7 92 523 •  service-center@hazet.de

**HAZET - WERK Hermann Zerver GmbH & Co. KG** •  10 04 61 • D-42804 Remscheid • Germany

 +49 (0) 21 91 / 7 92-0 •  +49 (0) 21 91 / 7 92-375 (National) •  +49 (0) 21 91 / 7 92-400 (International)

 hazet.de •  info@hazet.de